

# IMFE

## INDUSTRIAL MODULAR FLOOR ENCLOSURE



 **ELECTRA CO.**





IMFE  
FRAME

01

IMFE  
DESCRIPTION

03

PANEL  
DESCRIPTION

07

IMFE  
ACCESSORIES

12

LIFTING  
PROCESS

15



# IMFE | FRAME

## PROFILE MAKING

### 1 PUNCH LINE

A galvanized steel sheet is first punched in uniform pitch holes

### 2 ROLLER LINE

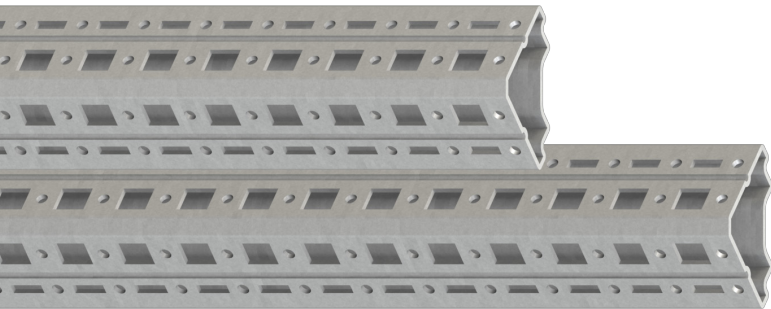
The structure is then bent 18 times to achieve its unique triangular shape

### 3 WELDING

Afterwards, the structure is welded and polished

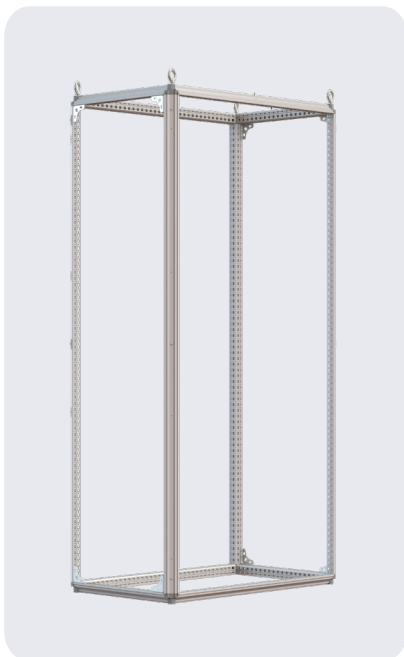
### 4 ELECTROPHORESIS

Finally, it undergoes degreasing, phosphating, dual-rinsing, passivating and kiln drying



The unique triangular design makes the corners stronger, stable and highly resistant to deflection and plastic deformation.

## FRAME SPECIFICATIONS



### FRAME

2.0 mm thick galvanized steel sheet

### FINISHING

Coated with wrinkled light gray epoxy powder RAL 7035

### MAXIMUM DYNAMIC LOAD

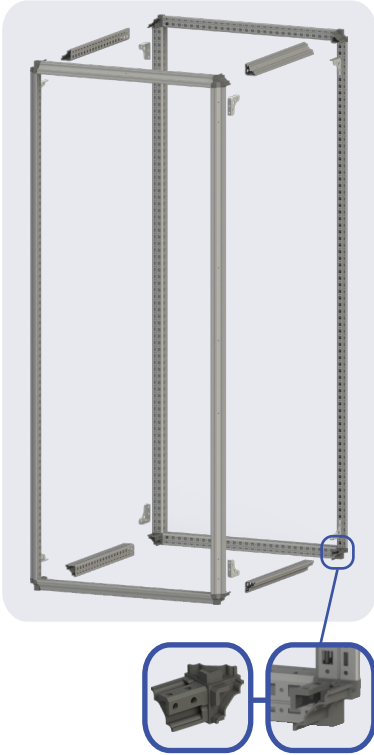
1800 kg

### MAXIMUM STATIC LOAD


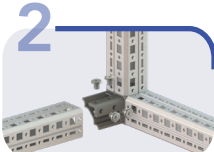
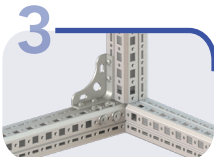
2000 kg



## FRAME ASSEMBLY

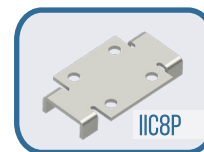
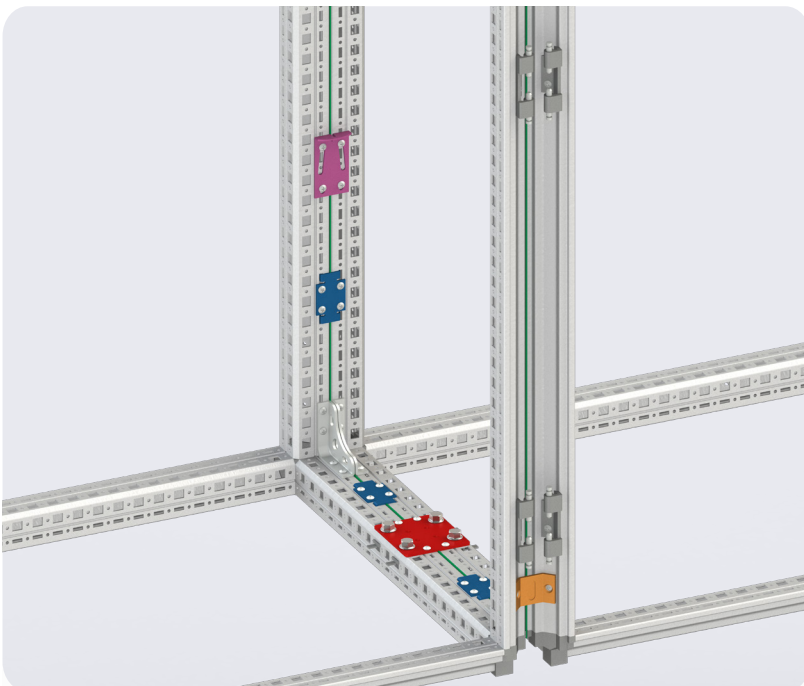


The complete frame structure consists of a front frame, a rear frame and four horizontal depth profiles. These parts are separately assembled to reduce storage space occupation and transportation costs. The complete frame structure can be assembled easily with the help of the instruction guide.

-  The front and rear frames are each made up of four profile pieces already welded to four corners.
-  M12 screws are used to connect them with the horizontal profiles to form a complete assembly.
-  When assembled, four corner reinforcement pieces are used to strengthen the corners.

## FRAME CONNECTION

Two or more IMFEs can be joined together using the frame connecting accessories below.



Internal Clamps  
Quantity: 8 pieces



External Clamps  
Quantity: 6 pieces



Baying Clips  
Quantity: 4 pieces



T Gasket Sealant



Safety Clamp  
Quantity: 2 pieces

# IMFE | DESCRIPTION



The distinguishing features of the IMFE are its high International Protection (IP) grade of 55, high lifespan, and high load capacity, which are the same as a welded structure. Its reliable surface has passed 500 hours of the salt spray test.

## THE IMFE INCLUDES:

- Complete frame
- Single or double door with a four point locking system and a standard lock and key
- Left lock (for a double door cabinet)
- Rear panel
- Top panel
- Bottom platform
- Cable gland plate
- Screw kit with four eye-bolts, eight corner strengthening pieces, as well as side and rear hanging pieces



To provide our customers with the best sealant, Sonderhoff polyurethane-gasket foam machine delivers a suitable high elasticity sealant that **guarantees a tight fit between the panels and the frame with approximately 50 years of lifespan, if maintained between -40°C and 80°C.**



\* IMFE - Flexible Modular Low Voltage System is available upon request



\* IMFE - Outdoor Double-Shielded Telecommunication Cabinet is available upon request



# IMFE SPECIFICATIONS

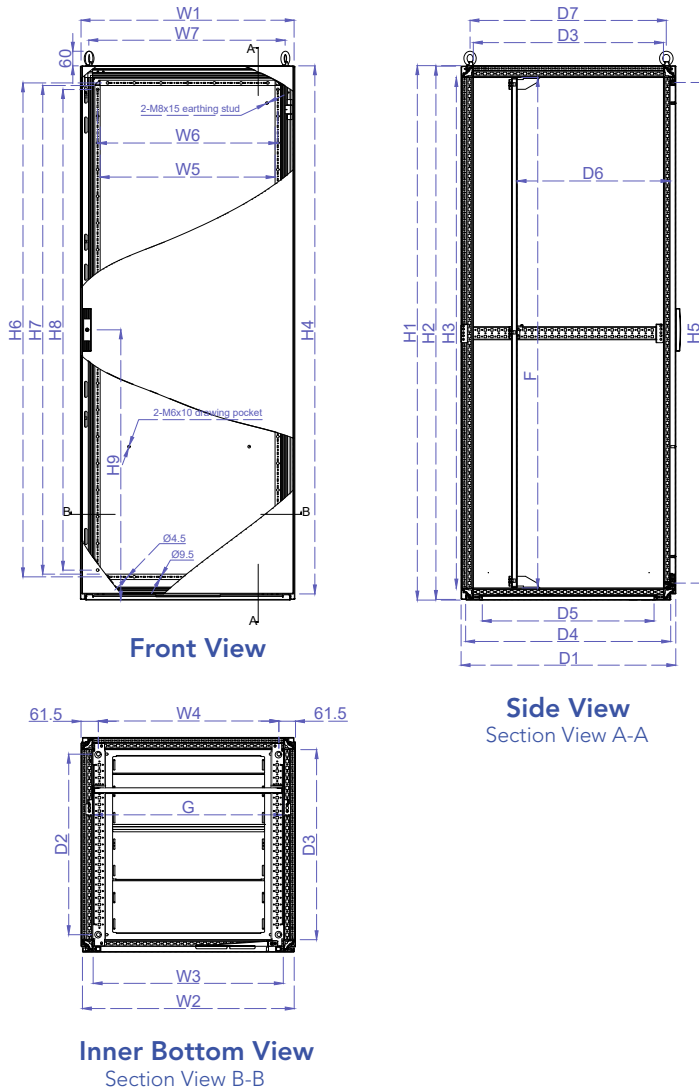
<b>IP</b> 55	<b>TOP PANEL</b> 1.5 mm thick mild steel sheet	<b>TREATMENT</b> Degreasing, phosphating, dual rinsing, passivating & kiln drying
<b>DOOR</b> 2.0 mm thick mild steel sheet	<b>BOTTOM PLATFORM</b> 2.0 mm thick mild steel sheet	<b>FINISHING</b> Coated with wrinkled light gray epoxy-polyester powder RAL 7035
<b>REAR PANEL</b> 1.5 mm thick mild steel sheet	<b>GLAND PLATE</b> 1.25 mm thick galvanized steel sheet	<b>SEALING</b> PU-gasket foam sealant [For more information, see page 3]
<b>SIDE PANELS</b> 1.5 mm thick mild steel sheet	<b>MOUNTING PLATE</b> 3.0 mm thick galvanized steel sheet	

# IMFE REFERENCES

Height (mm)	Width (mm)	Depth (mm)	Doors	Standard References *	Frame and Horizontal Profiles	Weight (kg)	Top and Bottom Panels	Weight (kg)	Front Door	Weight (kg)	Rear Panel	Weight (kg)	2 Side Panels	Weight (kg)	Mounting Plate	Weight (kg)
1800	600	400	1	IMFE 1806040	IFRM 18060-HP40	23.78	ITB 6040	7.30	IFD 18060	22.54	IRP 18060	15.20	ISP 18040	19.80	IMP 18060	20.90
	600	600	1	IMFE 1806060	IFRM 18060-HP60	25.25	ITB 6060	10.80	IFD 18060	22.54	IRP 18060	15.20	ISP 18060	29.50	IMP 18060	20.90
	600	800	1	IMFE 1806080	IFRM 18060-HP80	26.77	ITB 6080	13.86	IFD 18060	22.54	IRP 18060	15.20	ISP 18080	37.50	IMP 18060	20.90
	800	400	1	IMFE 1808040	IFRM 18080-HP40	25.30	ITB 8040	9.34	IFD 18080	28.44	IRP 18080	19.74	ISP 18040	19.80	IMP 18080	25.60
	800	600	1	IMFE 1808060	IFRM 18080-HP60	26.77	ITB 8060	13.86	IFD 18080	28.44	IRP 18080	19.74	ISP 18060	29.50	IMP 18080	25.60
	800	800	1	IMFE 1808080	IFRM 18080-HP80	28.29	ITB 8080	17.36	IFD 18080	28.44	IRP 18080	19.74	ISP 18080	37.50	IMP 18080	25.60
	1000	400	2	IMFE 18010040	IFRM 180100-HP40	26.92	ITB 10040	11.46	IFD 180100	39.68	IRP 180100	24.28	ISP 18040	19.80	IMP 180100	31.10
	1000	600	2	IMFE 18010060	IFRM 180100-HP60	28.39	ITB 10060	15.98	IFD 180100	39.68	IRP 180100	24.28	ISP 18060	29.50	IMP 180100	31.10
	1000	800	2	IMFE 18010080	IFRM 180100-HP80	29.91	ITB 10080	21.36	IFD 180100	39.68	IRP 180100	24.28	ISP 18080	37.50	IMP 180100	31.10
	1200	400	2	IMFE 18012040	IFRM 180120-HP40	28.35	ITB 12040	13.94	IFD 180120	45.66	IRP 180120	28.84	ISP 18040	19.80	IMP 180120	37.50
	1200	600	2	IMFE 18012060	IFRM 180120-HP60	29.82	ITB 12060	19.98	IFD 180120	45.66	IRP 180120	28.84	ISP 18060	29.50	IMP 180120	37.50
	1200	800	2	IMFE 18012080	IFRM 180120-HP80	31.34	ITB 12080	25.82	IFD 180120	45.66	IRP 180120	28.84	ISP 18080	37.50	IMP 180120	37.50
2000	600	400	1	IMFE 2006040	IFRM 20060-HP40	25.29	ITB 6040	7.30	IFD 20060	24.20	IRP 20060	16.80	ISP 20040	20.90	IMP 20060	21.10
	600	600	1	IMFE 2006060	IFRM 20060-HP60	26.74	ITB 6060	10.80	IFD 20060	24.20	IRP 20060	16.80	ISP 20060	31.20	IMP 20060	21.10
	600	800	1	IMFE 2006080	IFRM 20060-HP80	28.26	ITB 6080	13.86	IFD 20060	24.20	IRP 20060	16.80	ISP 20080	39.50	IMP 20060	21.10
	800	400	1	IMFE 2008040	IFRM 20080-HP40	26.79	ITB 8040	9.34	IFD 20080	31.42	IRP 20080	21.84	ISP 20040	20.90	IMP 20080	28.60
	800	600	1	IMFE 2008060	IFRM 20080-HP60	28.26	ITB 8060	13.86	IFD 20080	31.42	IRP 20080	21.84	ISP 20060	31.20	IMP 20080	28.60
	800	800	1	IMFE 2008080	IFRM 20080-HP80	29.78	ITB 8080	17.36	IFD 20080	31.42	IRP 20080	21.84	ISP 20080	39.50	IMP 20080	28.60
	1000	400	2	IMFE 20010040	IFRM 200100-HP40	28.41	ITB 10040	11.46	IFD 200100	43.64	IRP 200100	26.88	ISP 20040	20.90	IMP 200100	34.80
	1000	600	2	IMFE 20010060	IFRM 200100-HP60	29.88	ITB 10060	15.98	IFD 200100	43.64	IRP 200100	26.88	ISP 20060	31.20	IMP 200100	34.80
	1000	800	2	IMFE 20010080	IFRM 200100-HP80	31.40	ITB 10080	21.36	IFD 200100	43.64	IRP 200100	26.88	ISP 20080	39.50	IMP 200100	34.80
	1200	400	2	IMFE 20012040	IFRM 200120-HP40	29.84	ITB 12040	13.94	IFD 200120	50.66	IRP 200120	31.92	ISP 20040	20.90	IMP 200120	49.50
	1200	600	2	IMFE 20012060	IFRM 200120-HP60	31.30	ITB 12060	19.98	IFD 200120	50.66	IRP 200120	31.92	ISP 20060	31.20	IMP 200120	49.50
	1200	800	2	IMFE 20012080	IFRM 200120-HP80	32.82	ITB 12080	25.82	IFD 200120	50.66	IRP 200120	31.92	ISP 20080	39.50	IMP 200120	49.50
2200	600	400	1	IMFE 2206040	IFRM 22060-HP40	26.76	ITB 6040	7.30	IFD 22060	27.40	IRP 22060	18.41	ISP 22040	26.35	IMP 22060	25.65
	600	600	1	IMFE 2206060	IFRM 22060-HP60	28.22	ITB 6060	10.80	IFD 22060	27.40	IRP 22060	18.41	ISP 22060	33.50	IMP 22060	25.65
	600	800	1	IMFE 2206080	IFRM 22060-HP80	29.74	ITB 6080	13.86	IFD 22060	27.40	IRP 22060	18.41	ISP 22080	44.40	IMP 22060	25.65
	800	400	1	IMFE 2208040	IFRM 22080-HP40	28.28	ITB 8040	9.34	IFD 22080	34.48	IRP 22080	23.95	ISP 22040	26.35	IMP 22080	30.50
	800	600	1	IMFE 2208060	IFRM 22080-HP60	29.74	ITB 8060	13.86	IFD 22080	34.48	IRP 22080	23.95	ISP 22060	33.50	IMP 22080	30.50
	800	800	1	IMFE 2208080	IFRM 22080-HP80	31.26	ITB 8080	17.36	IFD 22080	34.48	IRP 22080	23.95	ISP 22080	44.40	IMP 22080	30.50
	1000	400	2	IMFE 22010040	IFRM 220100-HP40	29.89	ITB 10040	11.46	IFD 220100	49.24	IRP 220100	29.48	ISP 22040	26.35	IMP 220100	38.20
	1000	600	2	IMFE 22010060	IFRM 220100-HP60	31.36	ITB 10060	15.98	IFD 220100	49.24	IRP 220100	29.48	ISP 22060	33.50	IMP 220100	38.20
	1000	800	2	IMFE 22010080	IFRM 220100-HP80	32.88	ITB 10080	21.36	IFD 220100	49.24	IRP 220100	29.48	ISP 22080	44.40	IMP 220100	38.20
	1200	400	2	IMFE 22012040	IFRM 220120-HP40	31.32	ITB 12040	13.94	IFD 220120	56.50	IRP 220120	35.02	ISP 22040	26.35	IMP 220120	54.20
	1200	600	2	IMFE 22012060	IFRM 220120-HP60	32.79	ITB 12060	19.98	IFD 220120	56.50	IRP 220120	35.02	ISP 22060	33.50	IMP 220120	54.20
	1200	800	2	IMFE 22012080	IFRM 220120-HP80	34.31	ITB 12080	25.82	IFD 220120	56.50	IRP 220120	35.02	ISP 22080	44.40	IMP 220120	54.20

\* Including the Frame, Door(s), Top and Rear Panels, Bottom Platform and Gland Plate. Excluding the Side Panels and Mounting Plate.

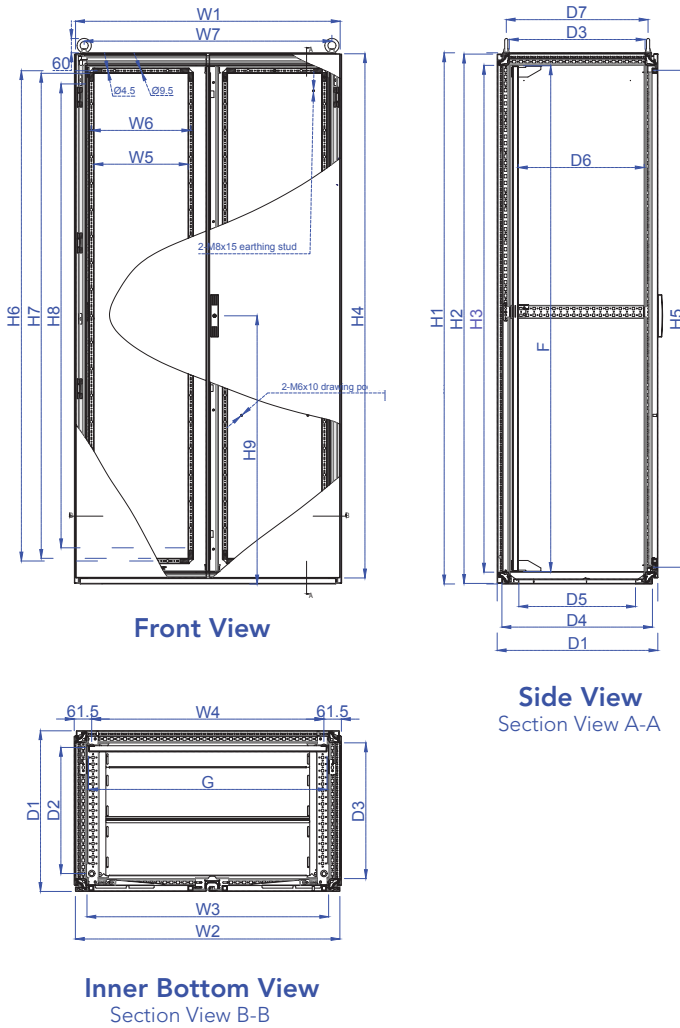
# IMFE DETAILED DRAWING



- H1** Overall height
- H2** Height of rear panel
- H3** Void between the enclosure frame
- H4** Height of door
- H5** Section length of system punching
- H6** Distance between the axes of the tubular door frame holes
- H7** Distance between the tubular door frame
- H8** Distance between the fastening bolts of the tubular door frame
- H9** Distance between the base and the center of the lock
- W1** Overall width
- W2** Width of door
- W3** Void between the enclosure frame
- W4** Section length of system punching/plinth attachment
- W5** Distance between the tubular door frame
- W6** Distance between the axes of the tubular door frame holes
- W7** Distance between the eye-bolts
- D1** Overall depth
- D2** Section length of system punching
- D3** Void between enclosure frame
- D4** Depth of base frame
- D5** Void between base opening
- D6** Range of mounting plate depth; adjustable on a 25 mm pitch pattern
- D7** Distance between the centers of eye-bolts

Doors	Height (mm)									Width (mm)							Depth (mm)							Mounting Plate (mm)	
	H1	H2	H3	H4	H5	H6	H7	H8	H9	W1	W2	W3	W4	W5	W6	W7	D1	D2	D3	D4	D5	D6	D7	F	G
1	1808	1797	1712	1778	1675	1650	1630	1600	913	598	593	512	476	455	475	535	408	275	312	368	240	155-455	335	1708	502
1	1808	1797	1712	1778	1675	1650	1630	1600	913	598	593	512	476	455	475	535	608	475	512	568	440	155-555	535	1708	502
1	1808	1797	1712	1778	1675	1650	1630	1600	913	598	593	512	476	455	475	535	808	675	712	768	640	155-755	735	1708	502
1	1808	1797	1712	1778	1675	1650	1630	1600	913	798	793	712	676	655	675	735	408	275	312	368	240	155-455	335	1708	702
1	1808	1797	1712	1778	1675	1650	1630	1600	913	798	793	712	676	655	675	735	608	475	512	568	440	155-555	535	1708	702
1	1808	1797	1712	1778	1675	1650	1630	1600	913	798	793	712	676	655	675	735	808	675	712	768	640	155-755	735	1708	702
2	1808	1797	1712	1778	1675	1650	1630	1600	913	998	493	912	876	355	375	935	408	275	312	368	240	155-455	335	1708	902
2	1808	1797	1712	1778	1675	1650	1630	1600	913	998	493	912	876	355	375	935	608	475	512	568	440	155-555	535	1708	902
2	1808	1797	1712	1778	1675	1650	1630	1600	913	998	493	912	876	355	375	935	808	675	712	768	640	155-755	735	1708	902
2	1808	1797	1712	1778	1675	1650	1630	1600	913	1198	593	1112	1076	455	475	1135	408	275	312	368	240	155-455	335	1708	1102
2	1808	1797	1712	1778	1675	1650	1630	1600	913	1198	593	1112	1076	455	475	1135	608	475	512	568	440	155-555	535	1708	1102
2	1808	1797	1712	1778	1675	1650	1630	1600	913	1198	593	1112	1076	455	475	1135	808	675	712	768	640	155-755	735	1708	1102
1	2008	1997	1912	1978	1875	1850	1830	1800	1013	598	593	512	476	455	475	535	408	275	312	368	240	155-455	335	1908	502
1	2008	1997	1912	1978	1875	1850	1830	1800	1013	598	593	512	476	455	475	535	608	475	512	568	440	155-555	535	1908	502
1	2008	1997	1912	1978	1875	1850	1830	1800	1013	598	593	512	476	455	475	535	808	675	712	768	640	155-755	735	1908	502
1	2008	1997	1912	1978	1875	1850	1830	1800	1013	798	793	712	676	655	675	735	408	275	312	368	240	155-455	335	1908	702
1	2008	1997	1912	1978	1875	1850	1830	1800	1013	798	793	712	676	655	675	735	608	475	512	568	440	155-555	535	1908	702
1	2008	1997	1912	1978	1875	1850	1830	1800	1013	798	793	712	676	655	675	735	808	675	712	768	640	155-755	735	1908	702



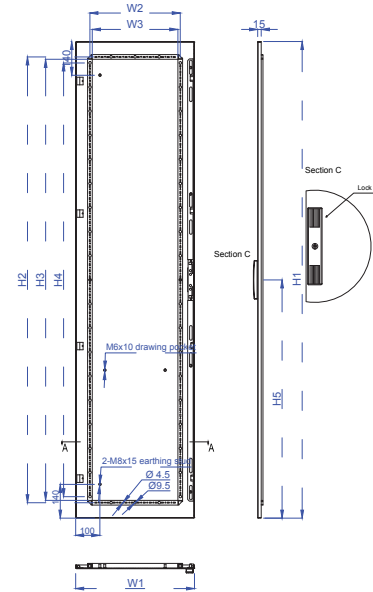


- H1** Overall height
  - H2** Height of rear panel
  - H3** Void between the enclosure frame
  - H4** Height of door
  - H5** Section length of system punching
  - H6** Distance between the axes of the tubular door frame holes
  - H7** Distance between the tubular door frame
  - H8** Distance between the fastening bolts of the tubular door frame
  - H9** Distance between the base and the center of the lock
- 
- W1** Overall width
  - W2** Width of door
  - W3** Void between the enclosure frame
  - W4** Section length of system punching/plinth attachment
  - W5** Distance between the tubular door frame
  - W6** Distance between the axes of the tubular door frame holes
  - W7** Distance between the eye-bolts
- 
- D1** Overall depth
  - D2** Section length of system punching
  - D3** Void between enclosure frame
  - D4** Depth of base frame
  - D5** Void between base opening
  - D6** Range of mounting plate depth; adjustable on a 25 mm pitch pattern
  - D7** Distance between the centers of eye-bolts

Doors	Height (mm)									Width (mm)							Depth (mm)							Mounting Plate (mm)	
	H1	H2	H3	H4	H5	H6	H7	H8	H9	W1	W2	W3	W4	W5	W6	W7	D1	D2	D3	D4	D5	D6	D7	F	G
2	2008	1997	1912	1978	1875	1850	1830	1800	1013	998	493	912	876	355	375	935	408	275	312	368	240	155-455	335	1908	902
2	2008	1997	1912	1978	1875	1850	1830	1800	1013	998	493	912	876	355	375	935	608	475	512	568	440	155-555	535	1908	902
2	2008	1997	1912	1978	1875	1850	1830	1800	1013	998	493	912	876	355	375	935	808	675	712	768	640	155-755	735	1908	902
2	2008	1997	1912	1978	1875	1850	1830	1800	1013	1198	593	1112	1076	455	475	1135	408	275	312	368	240	155-455	335	1908	1102
2	2008	1997	1912	1978	1875	1850	1830	1800	1013	1198	593	1112	1076	455	475	1135	608	475	512	568	440	155-555	535	1908	1102
2	2008	1997	1912	1978	1875	1850	1830	1800	1013	1198	593	1112	1076	455	475	1135	808	675	712	768	640	155-755	735	1908	1102
1	2208	2197	2112	2178	2075	2050	2030	2000	1113	598	593	512	476	455	475	535	408	275	312	368	240	155-455	335	2108	502
1	2208	2197	2112	2178	2075	2050	2030	2000	1113	598	593	512	476	455	475	535	608	475	512	568	440	155-555	535	2108	502
1	2208	2197	2112	2178	2075	2050	2030	2000	1113	598	593	512	476	455	475	535	808	675	712	768	640	155-755	735	2108	502
1	2208	2197	2112	2178	2075	2050	2030	2000	1113	798	793	712	676	655	675	735	408	275	312	368	240	155-455	335	2108	702
1	2208	2197	2112	2178	2075	2050	2030	2000	1113	798	793	712	676	655	675	735	608	475	512	568	440	155-555	535	2108	702
1	2208	2197	2112	2178	2075	2050	2030	2000	1113	798	793	712	676	655	675	735	808	675	712	768	640	155-755	735	2108	702
2	2208	2197	2112	2178	2075	2050	2030	2000	1113	998	493	912	876	355	375	935	408	275	312	368	240	155-455	335	2108	902
2	2208	2197	2112	2178	2075	2050	2030	2000	1113	998	493	912	876	355	375	935	608	475	512	568	440	155-555	535	2108	902
2	2208	2197	2112	2178	2075	2050	2030	2000	1113	998	493	912	876	355	375	935	808	675	712	768	640	155-755	735	2108	902
2	2208	2197	2112	2178	2075	2050	2030	2000	1113	1198	593	1112	1076	455	475	1135	408	275	312	368	240	155-455	335	2108	1102
2	2208	2197	2112	2178	2075	2050	2030	2000	1113	1198	593	1112	1076	455	475	1135	608	475	512	568	440	155-555	535	2108	1102
2	2208	2197	2112	2178	2075	2050	2030	2000	1113	1198	593	1112	1076	455	475	1135	808	675	712	768	640	155-755	735	2108	1102

# PANEL DESCRIPTION

## FRONT PANEL



IMFE Height (mm)	IMFE Width (mm)	Doors	Panel Height (mm)					Panel Width (mm)		
			H1	H2	H3	H4	H5	W1	W2	W3
1800	600	1	1778	1650	1629	1600	889	593	475	454
1800	800	1	1778	1650	1629	1600	889	793	675	654
1800	1000	2	1778	1650	1629	1600	889	493	375	354
1800	1200	2	1778	1650	1629	1600	889	593	475	454
2000	600	1	1978	1850	1829	1800	989	593	475	454
2000	800	1	1978	1850	1829	1800	989	793	675	654
2000	1000	2	1978	1850	1829	1800	989	493	375	354
2000	1200	2	1978	1850	1829	1800	989	593	475	454
2200	600	1	2178	2050	2029	2000	1089	593	475	454
2200	800	1	2178	2050	2029	2000	1089	793	675	654
2200	1000	2	2178	2050	2029	2000	1089	493	375	354
2200	1200	2	2178	2050	2029	2000	1089	593	475	454

- H1** Overall height
- H2** Distance between the axes of the door frame holes
- H3** Void between the door frames
- H4** Distance between the fastening bolts of the door frames
- H5** Distance between the base and the center of the lock
- W1** Overall width
- W2** Distance between the axes of the door frame holes
- W3** Void between the enclosure frame

## BUILT-IN ACCESSORIES



Door Ride-Up Piece



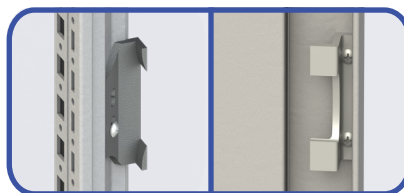
Double-Bit Standard Lock with Key



Hinge



Left Lock

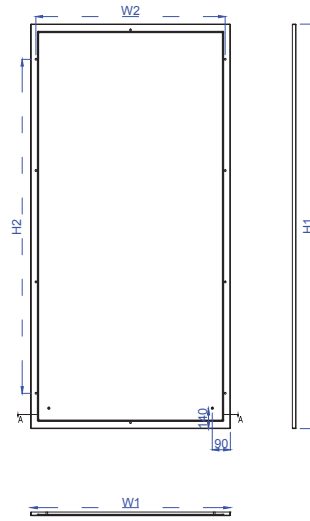
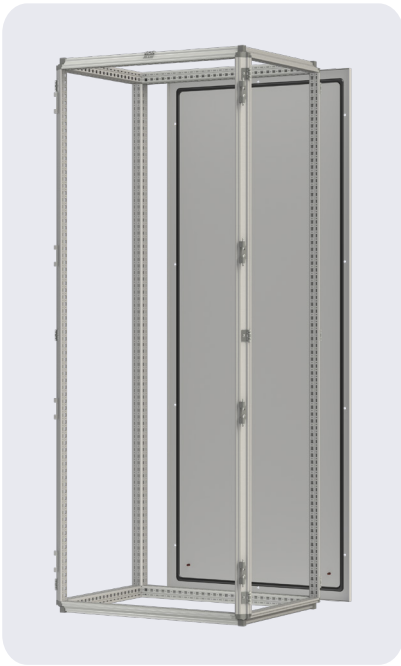


Single and Double Door Lock Catcher



Four Point Locking System

## REAR PANEL



IMFE Height (mm)	IMFE Width (mm)	Panel Height (mm)		Panel Width (mm)	
		H1	H2	W1	W2
1800	600	1797	1450	592	539
1800	800	1797	1450	792	739
1800	1000	1797	1450	492	939
1800	1200	1797	1450	592	1139
2000	600	1997	1650	592	539
2000	800	1997	1650	792	739
2000	1000	1997	1650	492	939
2000	1200	1997	1650	592	1139
2200	600	2197	1850	592	539
2200	800	2197	1850	792	739
2200	1000	2197	1850	492	939
2200	1200	2197	1850	592	1139

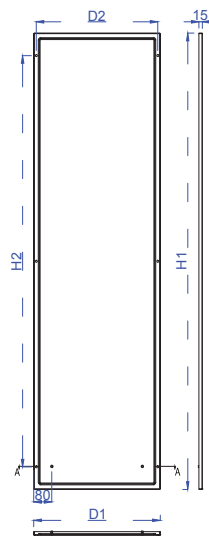
**H1** Overall height

**H2** Distance between mounting holes

**W1** Overall width

**W2** Distance between mounting holes

## SIDE PANEL



IMFE Height (mm)	IMFE Depth (mm)	Panel Height (mm)		Panel Depth (mm)	
		H1	H2	D1	D2
1800	400	1797	1600	363	339
1800	600	1797	1600	563	539
1800	800	1797	1600	763	739
2000	400	1997	1800	363	339
2000	600	1997	1800	563	539
2000	800	1997	1800	763	739
2200	400	2197	2000	363	339
2200	600	2197	2000	563	539
2200	800	2197	2000	763	739

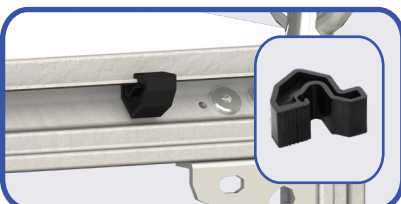
**H1** Overall height

**H2** Distance between mounting holes

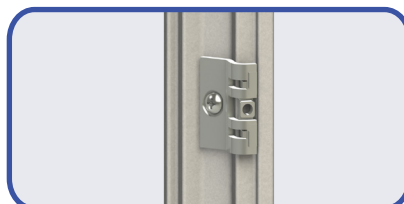
**D1** Overall depth

**D2** Distance between mounting holes

## BUILT-IN ACCESSORIES



Side and Rear Panels Hanging Piece

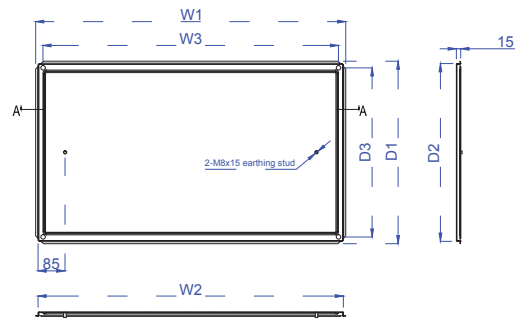


Side and Rear Panels Fixing Piece



Rear Panel Fixing Piece With Top and Bottom Panels [For enclosures of width 1000 mm and 1200 mm only]

## TOP PANEL

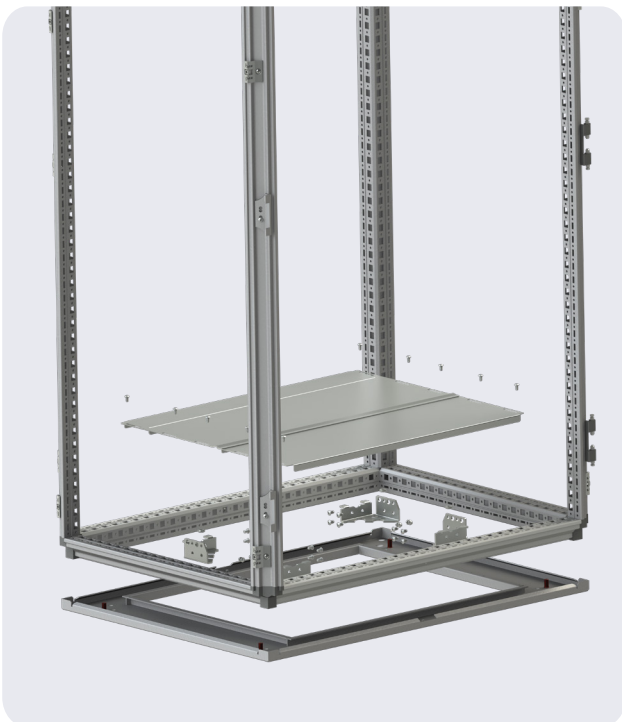


<b>W1</b>	Overall width
<b>W2</b>	Width of rectangular shape
<b>W3</b>	Distance between mounting holes

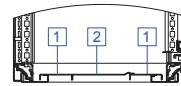
<b>D1</b>	Overall depth
<b>D2</b>	Depth of rectangular shape
<b>D3</b>	Distance between mounting holes

IMFE Width (mm)	IMFE Depth (mm)	Panel Width (mm)			Panel Depth (mm)		
		W1	W2	W3	D1	D2	D3
600	400	581	566	535	377	362	335
600	600	581	566	535	577	562	535
600	800	581	566	535	777	762	735
800	400	781	766	735	377	362	335
800	600	781	766	735	577	562	535
800	800	781	766	735	777	762	735
1000	400	981	966	935	377	362	335
1000	600	981	966	935	577	562	535
1000	800	981	966	935	777	762	735
1200	400	1181	1166	1135	377	362	335
1200	600	1181	1166	1135	577	562	535
1200	800	1181	1166	1135	777	762	735

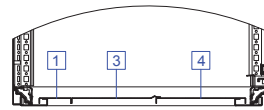
## BOTTOM PLATFORM & GLAND PLATE



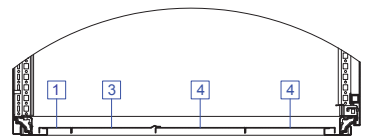
Depth: 400 mm



Depth: 600 mm



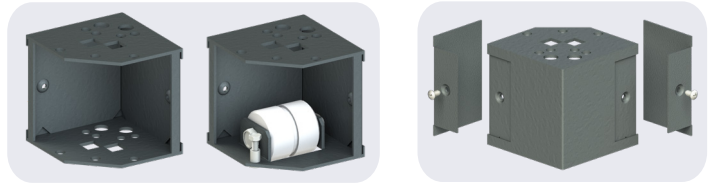
Depth: 800 mm



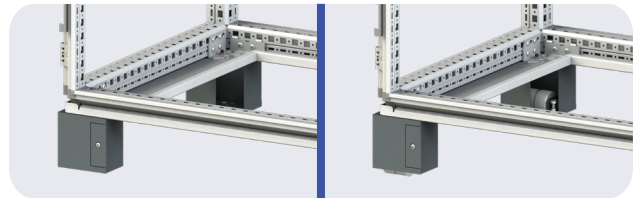
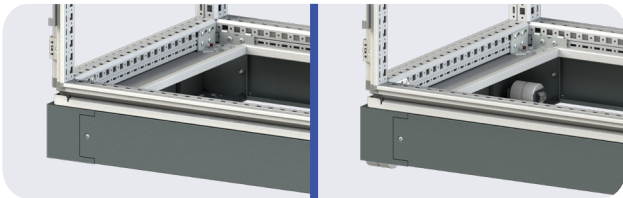
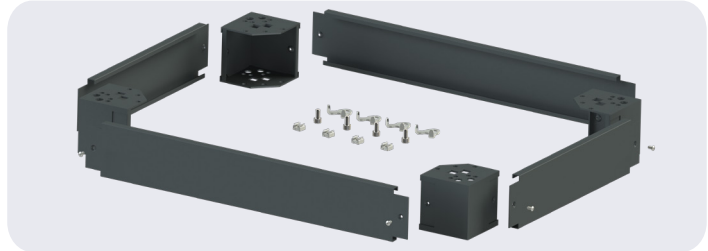
Number	Depth (mm)
1	68.5
2	148
3	216
4	200

# PLINTH SET

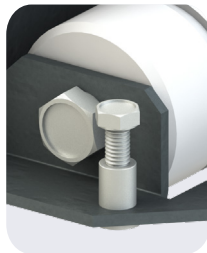
There are two kinds of plinth corners, the standard corners and the ones with casters. Both kinds can either be paired with front, rear and side covers to form a complete plinth, or they can be paired with lids to form base legs for the enclosure.



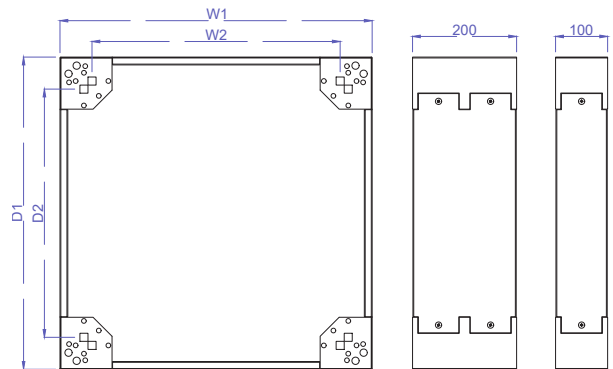
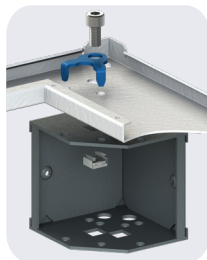
The plinth can be of two heights, 100 mm or 200 mm. If a taller plinth height is desired, a union of different plinths can be arranged.



The caster corners have a stainless steel screw each, that can be tightened in order to fix the enclosure in place. Four polyamide wheels can withstand 2000 kg of weight.



Corner clamps are included in both plinth options. They allow an easy three-point fastening system using only one 12 mm screw and cage nut for each corner.



**W1** Overall width

**W2** Distance between connecting holes

**D1** Overall depth

**D2** Distance between connecting holes

IMFE Dimensions (mm)		Complete Plinth (Standard Corners) Reference H100 mm or H200 mm		Weight (kg)		Complete Plinth (Caster Corners) Reference H100 mm or H200 mm		Weight (kg)		Width (mm)		Depth (mm)		Base Legs Reference	Weight (kg)
W	D	H100	H200	H100	H200	H100	H200	H100	H200	W1	W2	D1	D2		
600	400	PLC46/22.8-SC-10 (or 20)	5.68	9.76	PLC46/22.8-SC-10 (or 20)	6.28	10.36	600	476	368	276	Standard Corners (H100 mm) CL-SC-10		4.64	
600	600	PLC46/42.8-SC-10 (or 20)	6.20	10.88	PLC46/42.8-SC-10 (or 20)	6.80	11.48	600	476	568	476	Standard Corners (H200 mm) CL-SC-20			
600	800	PLC46/62.8-SC-10 (or 20)	7.02	12.00	PLC46/62.8-SC-10 (or 20)	7.62	12.60	600	476	768	676	Caster Corners (H100 mm) CL-CC-10			5.32
800	400	PLC66/22.8-SC-10 (or 20)	6.52	10.88	PLC66/22.8-SC-10 (or 20)	7.12	11.48	800	676	368	276	Standard Corners (H100 mm) CL-SC-10		7.60	
800	600	PLC66/42.8-SC-10 (or 20)	7.02	12.00	PLC66/42.8-SC-10 (or 20)	7.62	12.60	800	676	568	476	Standard Corners (H200 mm) CL-SC-20			
800	800	PLC66/62.8-SC-10 (or 20)	7.88	13.08	PLC66/62.8-SC-10 (or 20)	8.48	13.68	800	676	768	676	Caster Corners (H100 mm) CL-CC-10			8.20
1000	400	PLC86/22.8-SC-10 (or 20)	7.12	12.02	PLC86/22.8-SC-10 (or 20)	7.72	12.62	1000	876	368	276	Standard Corners (H100 mm) CL-SC-10		8.20	
1000	600	PLC86/42.8-SC-10 (or 20)	7.64	13.12	PLC86/42.8-SC-10 (or 20)	8.24	13.72	1000	876	568	476	Standard Corners (H200 mm) CL-SC-20			
1000	800	PLC86/62.8-SC-10 (or 20)	8.46	14.22	PLC86/62.8-SC-10 (or 20)	9.06	14.82	1000	876	768	676	Caster Corners (H100 mm) CL-CC-10			
1200	400	PLC106/22.8-SC-10 (or 20)	7.84	13.08	PLC106/22.8-SC-10 (or 20)	8.44	13.68	1200	1076	368	276	Standard Corners (H100 mm) CL-SC-10		8.20	
1200	600	PLC106/42.8-SC-10 (or 20)	8.34	14.20	PLC106/42.8-SC-10 (or 20)	8.94	14.80	1200	1076	568	476	Standard Corners (H200 mm) CL-SC-20			
1200	800	PLC106/62.8-SC-10 (or 20)	9.18	15.30	PLC106/62.8-SC-10 (or 20)	9.78	15.90	1200	1076	768	676	Caster Corners (H100 mm) CL-CC-10			

# MOUNTING PLATE

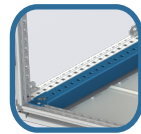
## FIXED MOUNTING PLATE



The standard mounting plate comes with accessories for fixation and is placed to the far back of the enclosure.



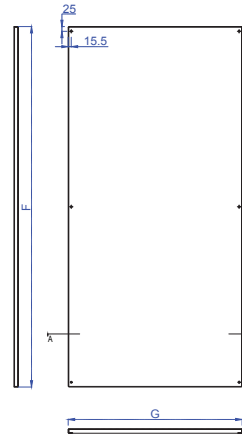
**Fixed Mounting Plate Holder**  
Quantity: 6 pieces



**Mounting Plate U-Support**  
Quantity: 2 pieces



**Cross-Brace (Optional Part)**  
Used to add mounting plate rigidity and vibration damping. Used on 1000 mm and 1200 mm width mounting plates.



IMFE Height (mm)	IMFE Width (mm)	F (mm)	G (mm)
1800	600	1708	502
1800	800	1708	702
1800	1000	1708	902
1800	1200	1708	1102
2000	600	1908	502
2000	800	1908	702
2000	1000	1908	902
2000	1200	1908	1102
2200	600	2108	502
2200	800	2108	702
2200	1000	2108	902
2200	1200	2108	1102

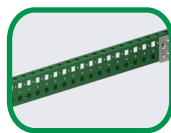
**F** Overall height  
**G** Overall width

## ADJUSTABLE MOUNTING PLATE

For a depth-adjustable mounting plate, the below needed accessories are available.



**Adjustable Mounting Plate Holder**  
Quantity: 4 pieces



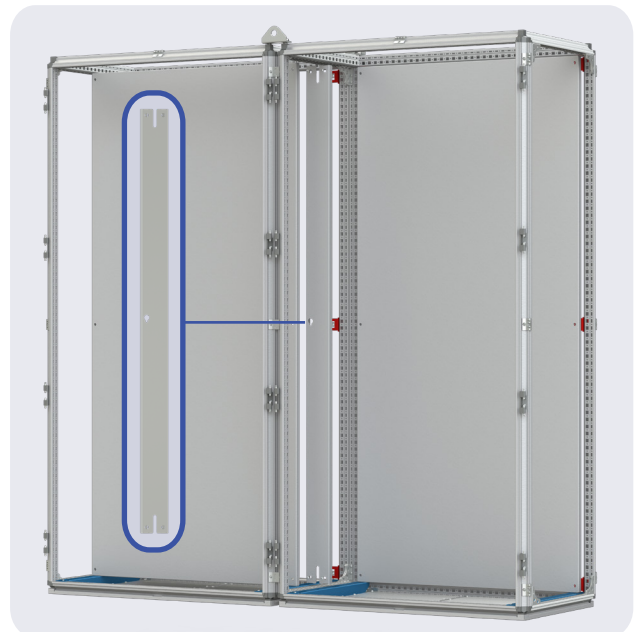
**Depth/Width Support**  
(Size depends on enclosure depth - See page 14)  
Quantity: 2 pieces



**Profile-Profile Angle 4.9 Connector**  
Quantity: 2 pieces

## MOUNTING PLATE EXTENSION

In case of two or more enclosures installed together, an extension piece that fills in the gap between two mounting plates is available.

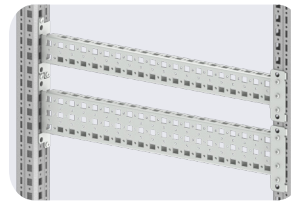
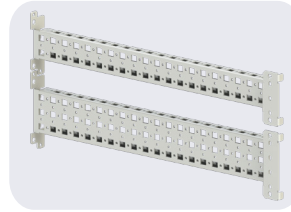


Reference	IMFE Height (mm)	Extension Height (mm)	Extension Width (mm)	Weight (kg)
IMPE180	1800	1692	96	3.20
IMPE200	2000	1892	96	3.60
IMPE220	2200	2092	96	3.91

# IMFE ACCESSORIES



## DEPTH SUPPORT



\* Some sizes of depth supports can also be used as width supports

Reference	IMFE Depth (mm)	Length (mm)	Width (mm)	Weight (kg)	
IDS4.49	400	308	49	0.40	○
IDS6.49	600	508	49	0.60	●
IDS8.49	800	708	49	0.90	●
IDS10.49	1000	908	49	1.00	+
IDS12.49	1200	1108	49	1.20	+
IDS4.74	400	308	74	0.50	○
IDS6.74	600	508	74	0.70	●
IDS8.74	800	708	74	1.00	●
IDS10.74	1000	908	74	1.20	+
IDS12.74	1200	1108	74	1.50	+

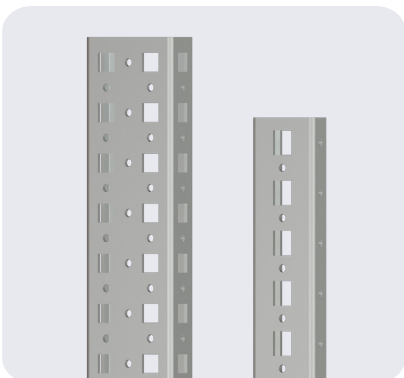
○ Depth compatible only  
 + Width compatible only  
 ● Depth and Width compatible

## WIDTH SUPPORT

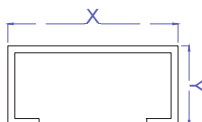


Reference	IMFE Width (mm)	Length (mm)	Width (mm)	Weight (kg)
WS6.48	600	538.5	48	1.00
WS6.73	600	538.5	73	1.38
WS6.127	600	538.5	127	1.72
WS6.148	600	538.5	148	2.04
WS8.48	800	738.5	48	1.20
WS8.73	800	738.5	73	1.68
WS8.127	800	738.5	127	2.08
WS8.148	800	738.5	148	2.50
WS10.48	1000	938.5	48	1.70
WS10.73	1000	938.5	73	2.28
WS10.127	1000	938.5	127	2.96
WS10.148	1000	938.5	148	3.46
WS12.48	1200	1138.5	48	1.88
WS12.73	1200	1138.5	73	2.50
WS12.127	1200	1138.5	127	3.14
WS12.148	1200	1138.5	148	3.78

## MOUNTING PROFILE



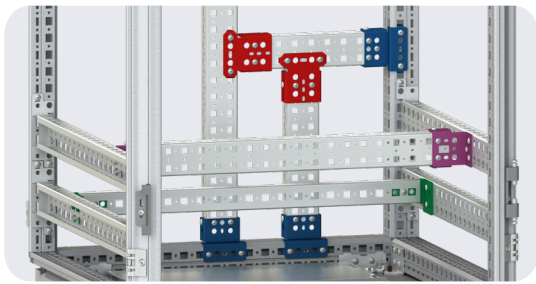
The mounting profile is a 2.5 meter long item used for mounting heavy-duty equipment. It is available as single pitches (3.5) or double pitches (4.9) and can be cut into the desired lengths. It can be connected at any direction using the designated connecting pieces to satisfy user requirements.



Reference	Length (mm)	X (mm)	Y (mm)	Weight (kg)
MPS3.5	2500	35	15	2.20
MPD4.9	2500	49	23	2.90

\*Continued on page 15 >

## MOUNTING PROFILE (CONTINUED)



Frame-Profile  
4.9 Connector  
Quantity: 2 pieces



Profile-Profile Angle  
4.9 Connector  
Quantity: 2 pieces

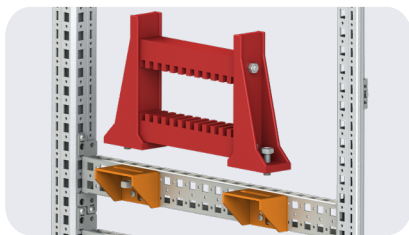


Profile-Profile Flat  
4.9 Connector  
Quantity: 2 pieces



Profile-Profile Angle  
3.5 Connector  
Quantity: 2 pieces

## ISOLATOR SUPPORT



Quantity: 2 pieces

- Screwed to depth supports
- Serves as a holder for an isolator, and, when applicable, can be used for other purposes as well

## MOUNTING SHELVES



Shelf Holder  
Quantity: 4 pieces

- Stable surface
- Withstands heavy equipment

\* This item is available upon request.

## DIVIDER PANEL

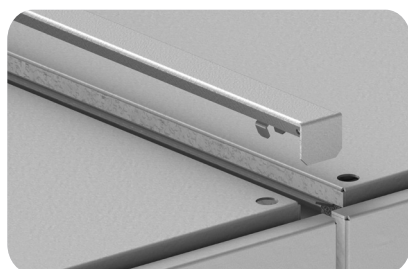
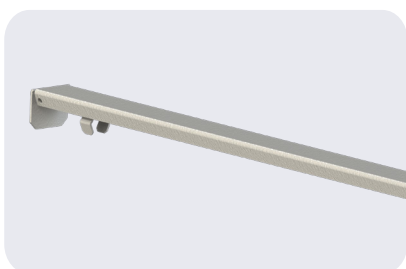


Internal Divider  
Panel Holder  
Quantity: 8 pieces

- Provides heat transfer isolation of one individual enclosure from its adjacent unit

\* This item is available upon request.

## TOP PANEL EXTENSION

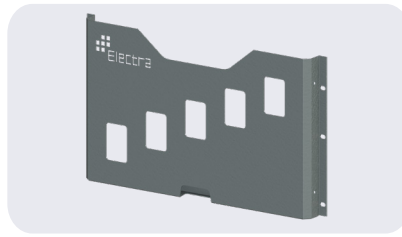


- Fills the gap between the top panels of two enclosures

Reference	Length (mm)	Width (mm)
ITPE40	362	34
ITPE60	562	34
ITPE80	762	34



## DRAWING POCKET



- For storing documents and drawings

Reference	Length (mm)	Width (mm)	Depth (mm)	For Door of Width (mm)
A4-ADP15	211	265	15	500, 600, 800, 1000
A4-ADP32	211	265	32	800 & 1000
A3-ADP32	258	454	32	800 & 1000

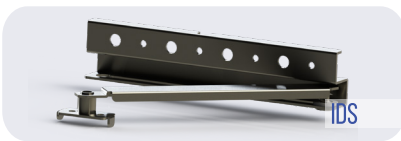
## PC SUPPORT



- For holding IT equipment

Reference	Length (mm)	Width (mm)	For Door of Width (mm)
PCS50	307	401	500
PCS60	407	401	600
PCS80	607	401	800

## DOOR STAY



- Fixes door and maintains an ideal opening angle

## HANDLE-PULL LOCK



- High-end  
- Adopts the pull-push method via the push button  
- No 'turn to open'

## LIMIT SWITCH & LAMP



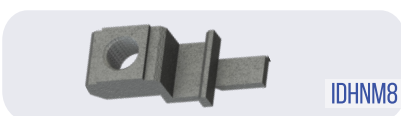
Two-way Limit Switch



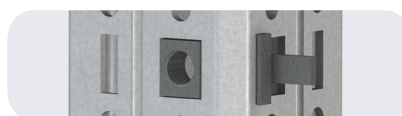
LED Lamp / 5 Watts

LED Lamp available as  
- 30 cm (LLM30)  
- 60 cm (LLM60)  
- 90 cm (LLM90)

## DUCK HEAD NUT

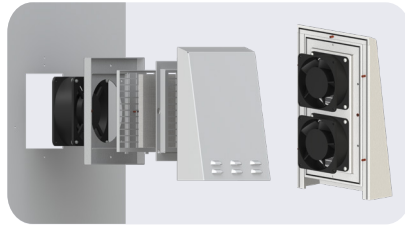
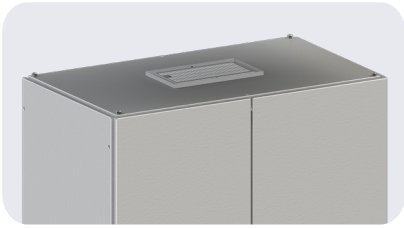


IDHNM8



- M8 threaded blocks  
- Supports heavy equipment

## FILTERS & CANOPIES

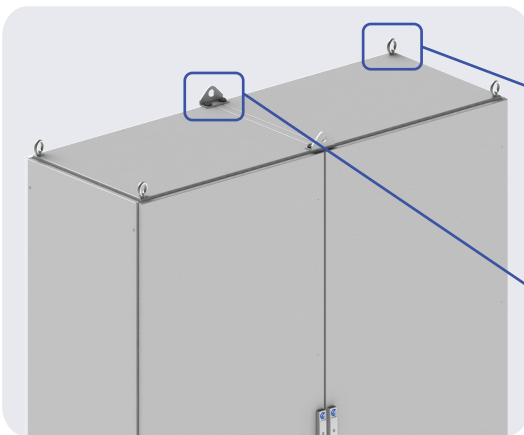


- Can be positioned on the top or sides of the IMFE
- Available as single or double filters
- Fans and/or canopies can be added to the filters

## LIFTING PROCESS

There are several methods for lifting single or multiple combined enclosures. Using eye-bolts or lifting brackets, IMFES can be lifted, moved and placed in a very safe way if the discussed instructions are respected and if the frame connecting accessories mentioned before are used (page 2).

### LIFTING EQUIPMENT

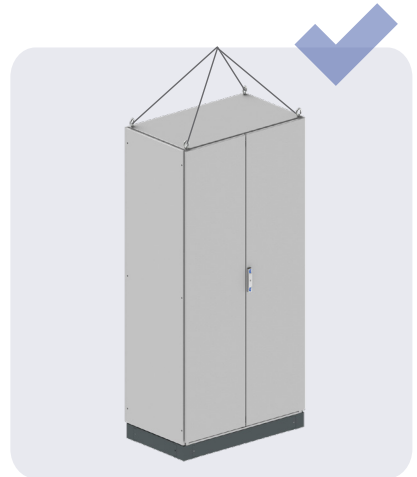


Eye-Bolts  
Quantity: 4 pieces

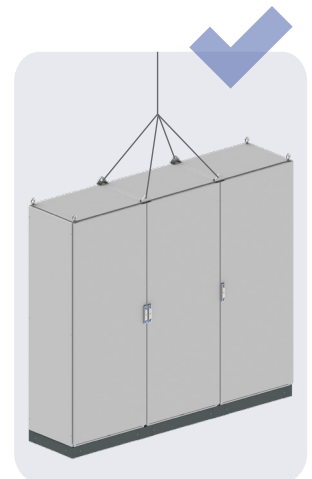
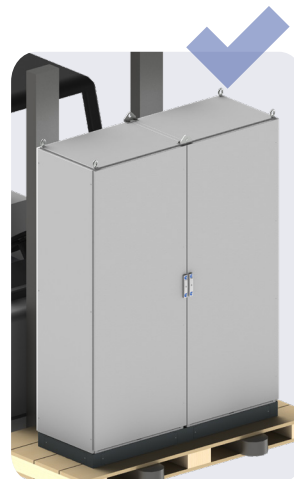
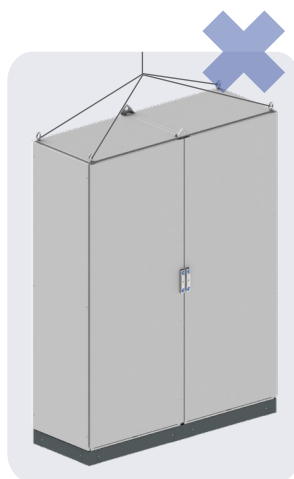
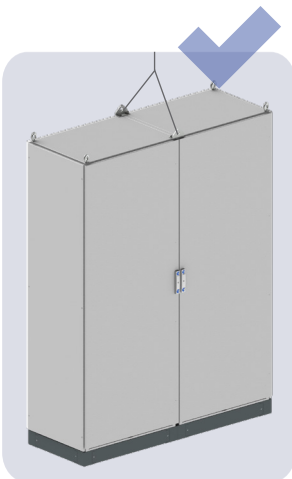


Lifting Brackets  
Quantity: 2 pieces

### LIFTING ONE ENCLOSURE

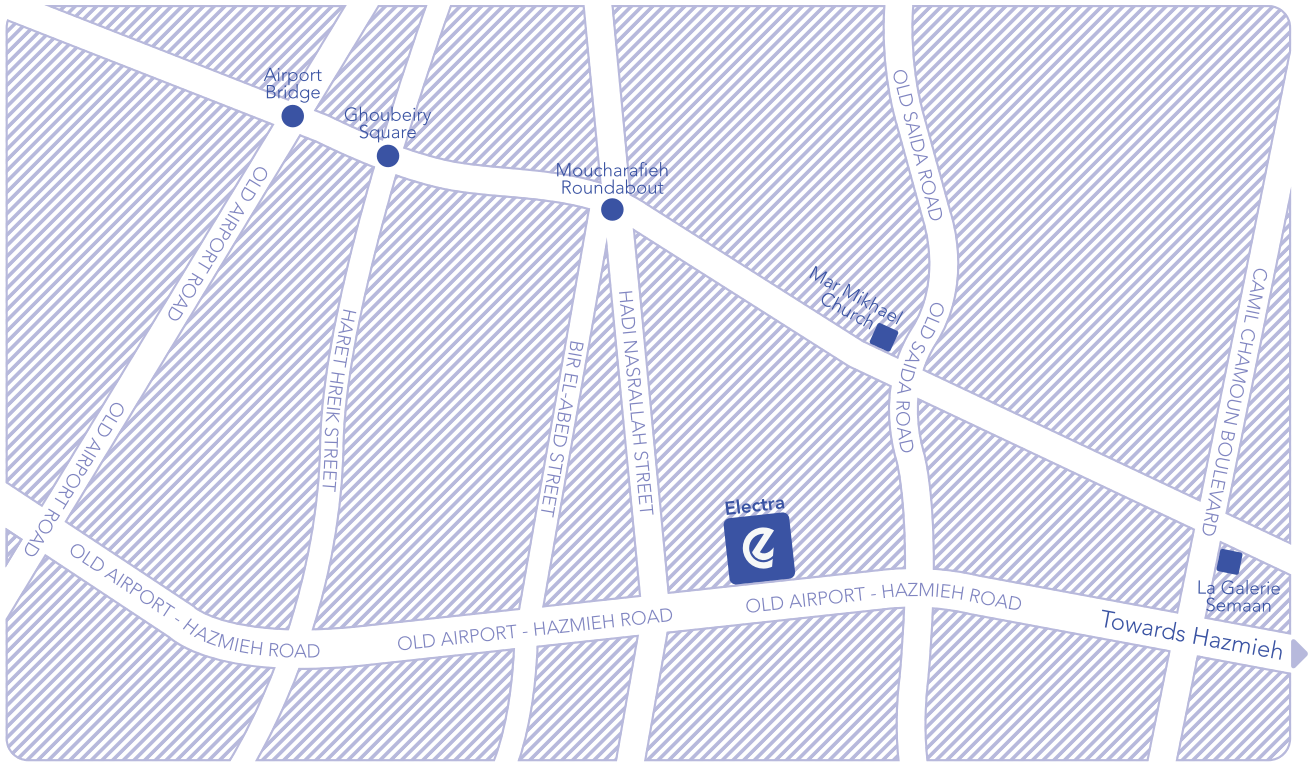


### LIFTING TWO OR MORE ENCLOSURES

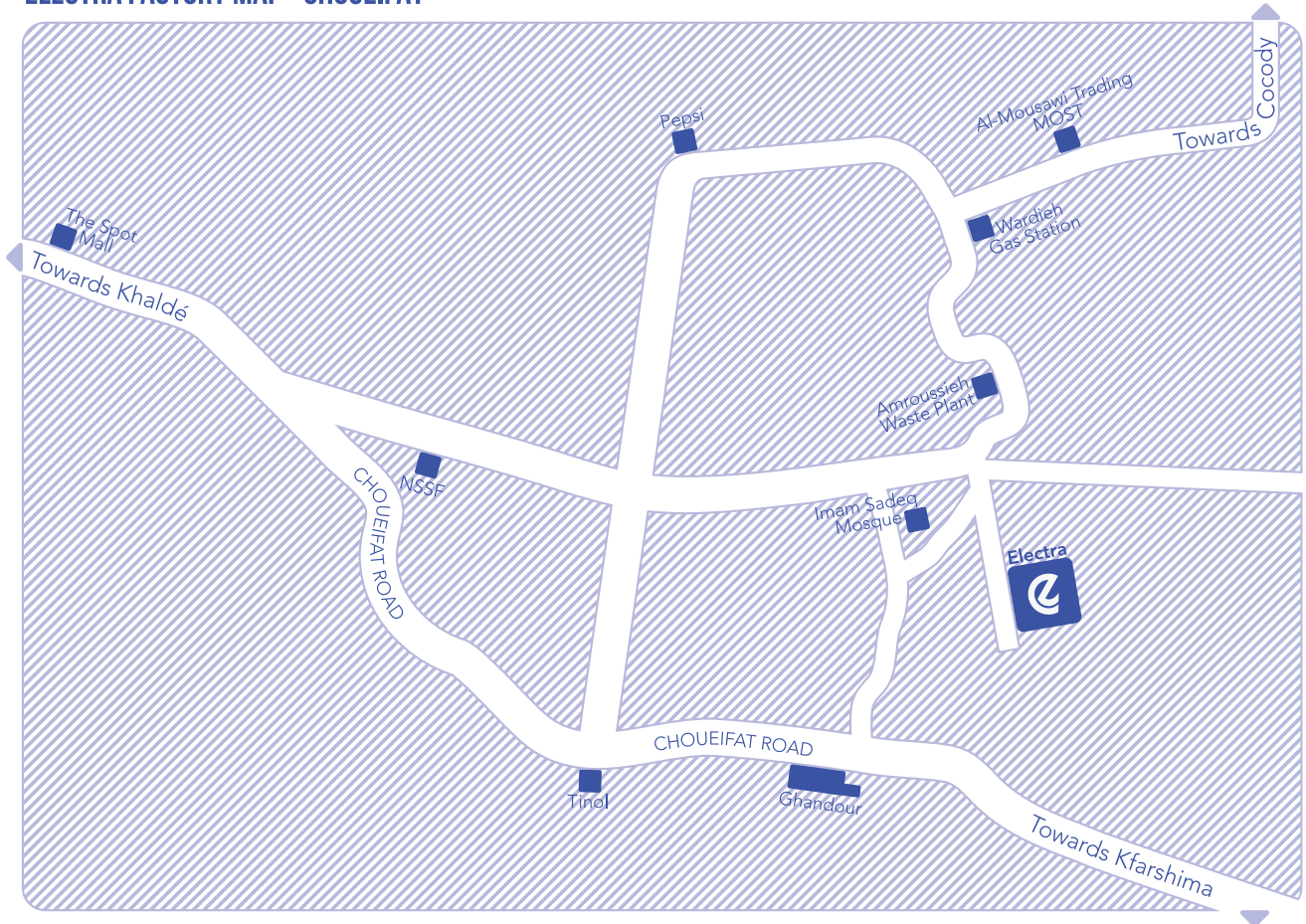




## ELECTRA HEADQUARTERS MAP - HARET HREIK



## ELECTRA FACTORY MAP - CHOUEIFAT



### Headquarters

+961 1 550 850/950  
+961 70 812 842



### Factory

+961 5 490 111/222  
+961 70 813 533



info@electraco.com



www.electraco.com