

19" NC  
ICR  
MBR

TELECOMMUNICATION  
EQUIPMENT



# TABLE OF CONTENTS

**INDUSTRIAL RESEARCH INSTITUTE**

Date: 01/08/2019  
No: 5227/48A2/512761/2019

**Report**

IRI Bldg. - Lebanese University Campus  
Haik (Beirut) - Lebanon  
P.O. Box: 11-2046 Beirut  
Tel: +961 3 4870100, Mobile: +961 3 284340  
Email: info@iri.org.lb - http://www.iri.org.lb

Client: **MESSRS. ELECTRA CO. s.a.l  
FOR INDUSTRY & TRADING  
AMROUSEH - CHOUEFAT - LEBANON**

Received on: "Painted Metallic Sheet"  
Received on: 16/07/2019

Reference: Your letter dated on 15/07/2019

**Results**

Testing duration: From 16/07/2019 to 01/08/2019. Unless otherwise specified, sampling was done by the client.

**ACCELERATED CORROSION**  
(IRI CODE NO. 094-3)

The Painted Metallic Sheet was subjected to accelerated corrosion procedure consisting of 10 cycles. Each cycle consists of two demi cycles as follows:

- 15 minutes in water
- 15 minutes at -6 °C
- 45 minutes at room temperature
- 45 minutes at 60 °C and humid atmosphere
- 45 minutes in an atmosphere 1 % SO<sub>2</sub>
- 45 minutes at 60 °C and dry atmosphere

Over nights and during the weekend the test panel was left soaked in sea water.

By the end of the 10 cycles the Painted Metallic Sheet subject this report did not show any sign of corrosion which corresponds to Re0 as per "L" échelle européenne de degré d'émoussellement pour peinture antirouille".

\*Sample your reference:  
-A0x10 cm treated and painted 1.25 mm thick mild steel finished sample in final condition.

Paint type: powder coating  
-Color: Grey RAL 7035, Outdoor

Result refers only to the sample tested.

MZ/MC/m

Dr. Joseph Matta  
Division Head  
Laboratories

Nabil Sheery  
Applied Research &  
Testing Director

**CONDITIONS & TERMS** - It is prohibited to use this report for advertising purposes.

Mild Steel Accelerated Corrosion Test

**INDUSTRIAL RESEARCH INSTITUTE**

Date: 01/08/2019  
No: 5227/48B2/512761/2019

**Report**

IRI Bldg. - Lebanese University Campus  
Haik (Beirut) - Lebanon  
P.O. Box: 11-2046 Beirut  
Tel: +961 3 4870100, Mobile: +961 3 284340  
Email: info@iri.org.lb - http://www.iri.org.lb

Client: **MESSRS. ELECTRA CO. s.a.l  
FOR INDUSTRY & TRADING  
AMROUSEH - CHOUEFAT - LEBANON**

Received on: "Painted Metallic Sheet"  
Received on: 16/07/2019

Reference: Your letter dated on 15/07/2019

**Results**

Testing duration: From 16/07/2019 to 01/08/2019. Unless otherwise specified, sampling was done by the client.

**ACCELERATED CORROSION**  
(IRI CODE NO. 094-3)

The Painted Metallic Sheet was subjected to accelerated corrosion procedure consisting of 10 cycles. Each cycle consists of two demi cycles as follows:

- 15 minutes in water
- 15 minutes at -6 °C
- 45 minutes at room temperature
- 45 minutes at 60 °C and humid atmosphere
- 45 minutes in an atmosphere 1 % SO<sub>2</sub>
- 45 minutes at 60 °C and dry atmosphere

Over nights and during the weekend the test panel was left soaked in sea water.

By the end of the 10 cycles the Painted Metallic Sheet subject this report did not show any sign of corrosion which corresponds to Re0 as per "L" échelle européenne de degré d'émoussellement pour peinture antirouille".

\*Sample your reference:  
-A0x10 cm treated and painted 1.5 mm thick galvanized steel finished sample in final condition.

Paint type: powder coating  
-Color: Grey RAL 7035, Outdoor

Result refers only to the sample tested.

MZ/MC/m

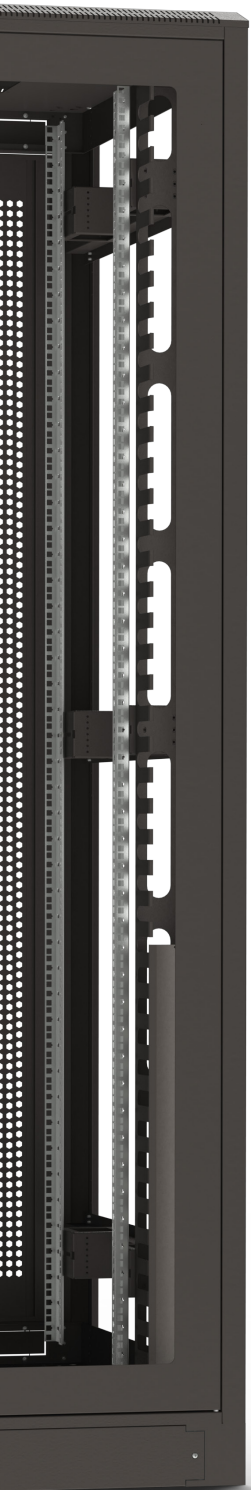
Dr. Joseph Matta  
Division Head  
Laboratories

Nabil Sheery  
Applied Research &  
Testing Director

**CONDITIONS & TERMS** - It is prohibited to use this report for advertising purposes.

Galvanized Steel Accelerated Corrosion Test





19" NETWORK  
CABINETS

01

19" NETWORK CABINET  
ACCESSORIES

04

INDUSTRIAL  
CABLE REELS

07

MODULAR  
BATTERY RACKS

08



# 19" NETWORK CABINETS



The 19" Network Cabinets are a new range of enclosures used for casing network components and data distribution panels and are mostly used in electronic and telecommunication distribution fields. There are two types of network cabinets, the **wall-mounted cabinet** and the **floor-standing cabinet**.

Different types of technical implementations, along with the proper accessories for each, offer a variety of application possibilities with practical and quick cabling solutions, easy installation and dismantling, and adjustable depth sizing.

The 19" Network Cabinets are manufactured with precision and a developed compact design to ensure convenient operation of various fields that match the latest European technologies.



## 19" NETWORK CABINET SPECIFICATIONS

### STANDARD

IEC 2-297

### IP

30

### MATERIAL

1, 1.5 and 2.0 mm mild steel

### TREATMENT

Degreasing, phosphating, dual rinsing, passivating & kiln drying

### FINISHING / WALL-MOUNTED NC

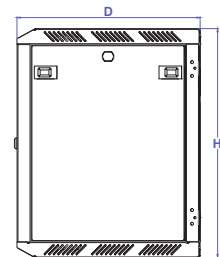
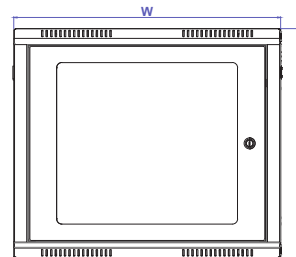
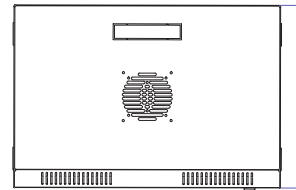
Coated with wrinkled matte black epoxy-polyester powder RAL 9005

### FINISHING / FLOOR-STANDING NC

**Base Frame:** Coated with dark gray epoxy-polyester powder RAL 7022

**Panels:** Coated with wrinkled light gray epoxy-polyester powder RAL 7035

# WALL-MOUNTING NETWORK CABINET

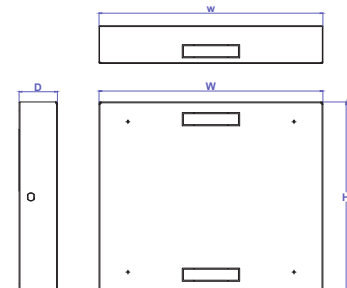


## FEATURES:

- Available in 3, 6, 9, 12, 15 and 18 units
- Available in 40, 45 and 60 cm depths
- Front transparent door
- Four nut columns
- Removable attached rectangular plates on the top and bottom
- The back panel can be replaced with a door in 6, 9, 12 and 15 units
- Removable side panels with sliding locks in 6, 9, 12, 15 and 18 units
- Sliding locks can be exchanged with keyed sliding locks

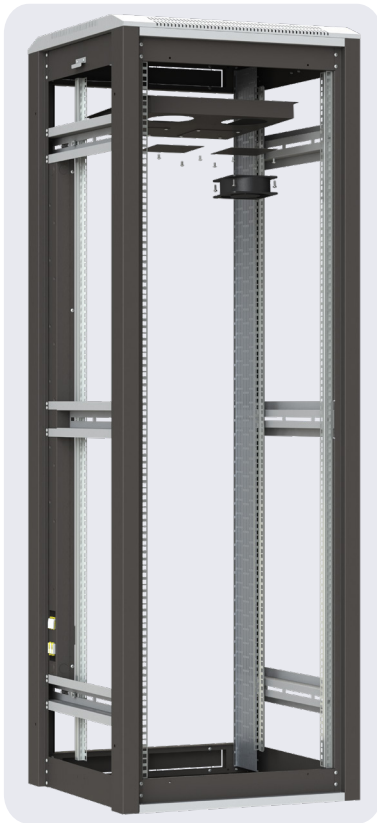
| References         | Units | Network Cabinet Dimensions (mm) |     |       |
|--------------------|-------|---------------------------------|-----|-------|
|                    |       | W                               | D   | H     |
| 19"NC.3U-58.5-D40  | 3U    | 585                             | 400 | 236.5 |
| 19"NC.6U-58.5-D45  | 6U    | 585                             | 450 | 370   |
| 19"NC.6U-58.5-D60  | 6U    | 585                             | 600 | 370   |
| 19"NC.9U-58.5-D45  | 9U    | 585                             | 450 | 503.5 |
| 19"NC.9U-58.5-D60  | 9U    | 585                             | 600 | 503.5 |
| 19"NC.12U-58.5-D45 | 12U   | 585                             | 450 | 637   |
| 19"NC.12U-58.5-D60 | 12U   | 585                             | 600 | 637   |
| 19"NC.15U-58.5-D45 | 15U   | 585                             | 450 | 770.5 |
| 19"NC.15U-58.5-D60 | 15U   | 585                             | 600 | 770.5 |
| 19"NC.18U-58.5-D60 | 18U   | 585                             | 600 | 904   |

# BACK DOOR

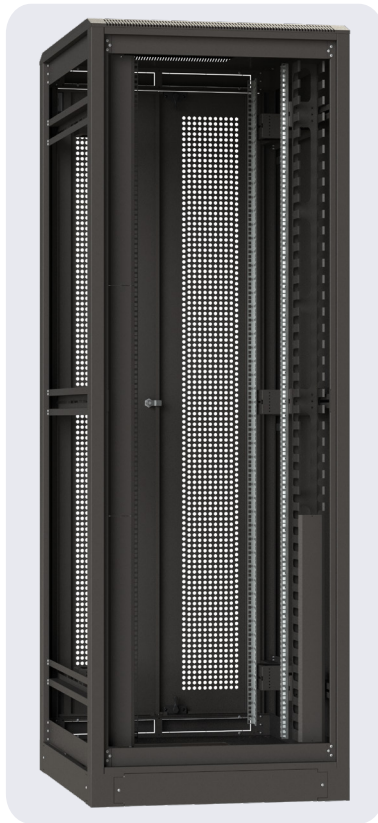


| References | Units | Back Door Dimensions (mm) |     |       |
|------------|-------|---------------------------|-----|-------|
|            |       | D                         | W   | H     |
| 19"BD.6U   | 6U    | 100                       | 585 | 370   |
| 19"BD.9U   | 9U    | 100                       | 585 | 503.5 |
| 19"BD.12U  | 12U   | 100                       | 585 | 637   |
| 19"BD.15U  | 15U   | 100                       | 585 | 770.5 |

# FLOOR STANDING NETWORK CABINET



Width 600 mm



Width 800 mm

## FEATURES:

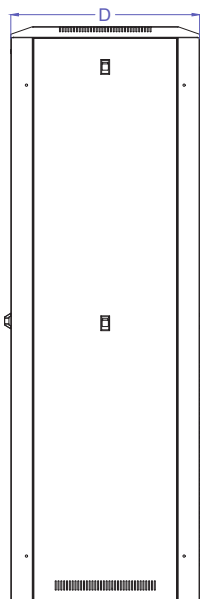
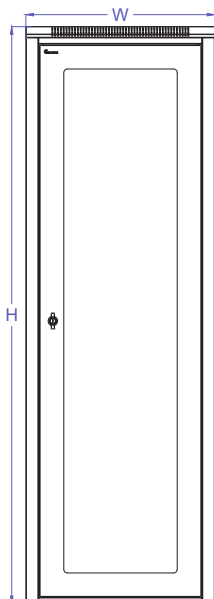
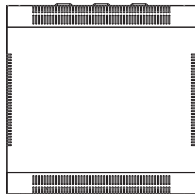
- Available in 22, 27, 32, 37, 42 and 47 units
- **Width** available in 600 & 800 mm
- **Depth** available in 600, 800 and 1000 mm
- Front transparent door
- Two side panels with sliding locks (Sliding locks can be exchanged with keyed sliding locks)
- Four nut columns
- Ceiling ventilation box ready to accommodate **4 fans** for **600 mm depth**, and **6 fans** for depths **above 600 mm**
- Keyed wing knob lock for the front and back doors

### For 600 mm width:

- Back door with punched louvers for ventilation
- One cable tray

### For 800 mm width:

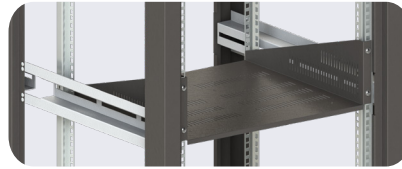
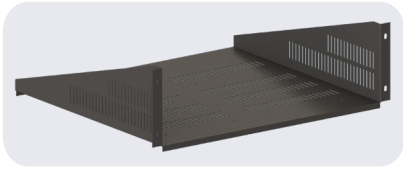
- Perforated back door
- Two vertical cable managements



| References        | Units | Network Cabinet Dimensions (mm) |      |        |
|-------------------|-------|---------------------------------|------|--------|
|                   |       | W                               | D    | H      |
| 19"NC.22U-60-D60  | 22U   | 600                             | 600  | 1166   |
| 19"NC.22U-60-D80  | 22U   | 600                             | 800  | 1166   |
| 19"NC.27U-60-D60  | 27U   | 600                             | 600  | 1388.5 |
| 19"NC.27U-60-D80  | 27U   | 600                             | 800  | 1388.5 |
| 19"NC.27U-60-D100 | 27U   | 600                             | 1000 | 1388.5 |
| 19"NC.32U-60-D60  | 32U   | 600                             | 600  | 1611   |
| 19"NC.32U-60-D80  | 32U   | 600                             | 800  | 1611   |
| 19"NC.32U-60-D100 | 32U   | 600                             | 1000 | 1611   |
| 19"NC.37U-60-D60  | 37U   | 600                             | 600  | 1833.5 |
| 19"NC.37U-60-D80  | 37U   | 600                             | 800  | 1833.5 |
| 19"NC.37U-60-D100 | 37U   | 600                             | 1000 | 1833.5 |
| 19"NC.42U-60-D60  | 42U   | 600                             | 600  | 2056   |
| 19"NC.42U-60-D80  | 42U   | 600                             | 800  | 2056   |
| 19"NC.42U-60-D100 | 42U   | 600                             | 1000 | 2056   |
| 19"NC.47U-60-D60  | 47U   | 600                             | 600  | 2278.5 |
| 19"NC.47U-60-D80  | 47U   | 600                             | 800  | 2278.5 |
| 19"NC.47U-60-D100 | 47U   | 600                             | 1000 | 2278.5 |
| 19"NC.37U-80-D60  | 37U   | 800                             | 600  | 1833.5 |
| 19"NC.37U-80-D80  | 37U   | 800                             | 800  | 1833.5 |
| 19"NC.37U-80-D100 | 37U   | 800                             | 1000 | 1833.5 |
| 19"NC.42U-80-D60  | 42U   | 800                             | 600  | 2056   |
| 19"NC.42U-80-D80  | 42U   | 800                             | 800  | 2056   |
| 19"NC.42U-80-D100 | 42U   | 800                             | 1000 | 2056   |
| 19"NC.47U-80-D60  | 47U   | 800                             | 600  | 2278.5 |
| 19"NC.47U-80-D80  | 47U   | 800                             | 800  | 2278.5 |
| 19"NC.47U-80-D100 | 47U   | 800                             | 1000 | 2278.5 |

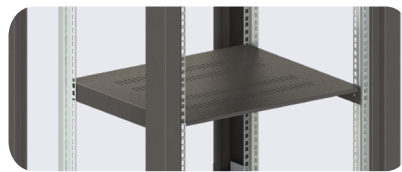
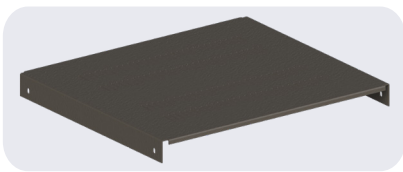
# 19" NETWORK CABINET | ACCESSORIES

## CANTILEVER TRAY



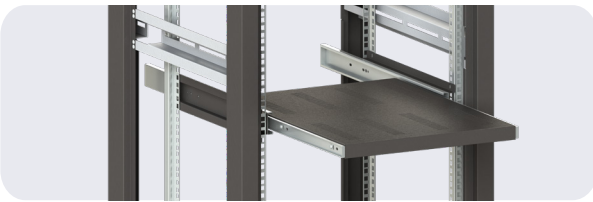
- 19" ventilated tray
- 420 mm in depth
- Fits on all network cabinets

## FIXED TRAY



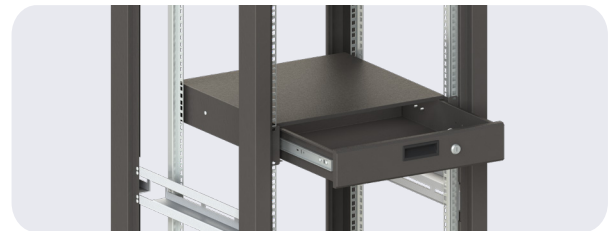
| References | Depth (mm) | Notes      |
|------------|------------|------------|
| 19"BFT.36  | 360        | Blank      |
| 19"BFT.41  | 410        | Blank      |
| 19"VFT.36  | 360        | Ventilated |
| 19"VFT.41  | 410        | Ventilated |

## SLIDING TRAY



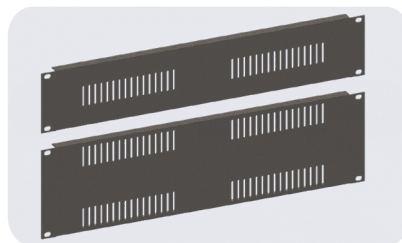
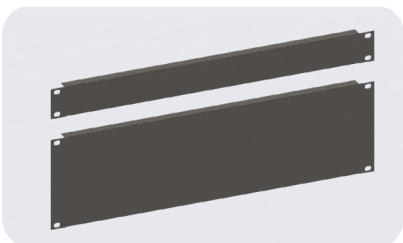
| Reference | Depth (mm) | Notes      |
|-----------|------------|------------|
| 19"ST-B   | 540        | Blank      |
| 19"ST-V   | 540        | Ventilated |

## SLIDING DRAWER



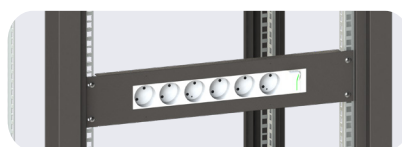
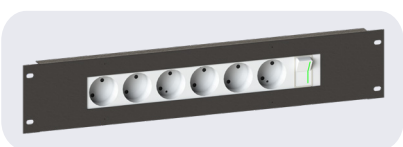
| Reference | Units | Depth (mm) |
|-----------|-------|------------|
| 19"SD2U-C | 2U    | 540        |

## FILLER PANEL



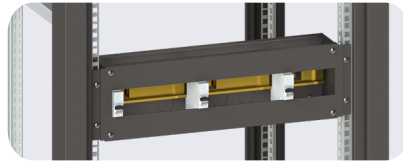
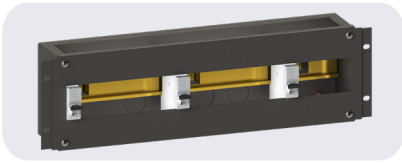
| Reference | Units | Notes      |
|-----------|-------|------------|
| 19"FP1U-B | 1U    | Blank      |
| 19"FP1U-V | 1U    | Ventilated |
| 19"FP2U-B | 2U    | Blank      |
| 19"FP2U-V | 2U    | Ventilated |
| 19"FP3U-B | 3U    | Blank      |
| 19"FP3U-V | 3U    | Ventilated |

## HORIZONTAL POWER STRIP



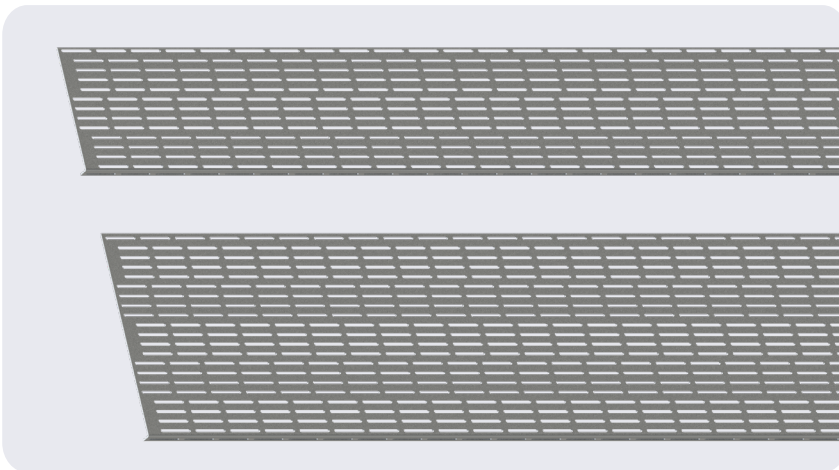
- 2U
- 6 outlets + switch with pilot lights
- Fits on all network cabinets

## EMPTY BREAKER BOX



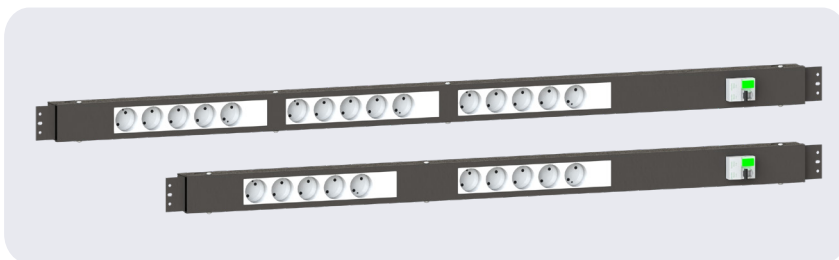
- 3U
- 23 modules
- Fits on all network cabinets

## CABLE TRAY



| Reference | Units | Dimensions (mm) |        | Compatible on Cabinets of Depth (mm) |
|-----------|-------|-----------------|--------|--------------------------------------|
|           |       | W               | H      |                                      |
| CT22U.11  | 22U   | 11.5            | 1111   | 600                                  |
| CT22U.18  | 22U   | 18.5            | 1111   | 800 & 1000                           |
| CT27U.11  | 27U   | 11.5            | 1333.5 | 600                                  |
| CT27U.18  | 27U   | 18.5            | 1333.5 | 800 & 1000                           |
| CT32U.11  | 32U   | 11.5            | 1556   | 600                                  |
| CT32U.18  | 32U   | 18.5            | 1556   | 800 & 1000                           |
| CT37U.11  | 37U   | 11.5            | 1778.5 | 600                                  |
| CT37U.18  | 37U   | 18.5            | 1778.5 | 800 & 1000                           |
| CT42U.11  | 42U   | 11.5            | 2001   | 600                                  |
| CT42U.18  | 42U   | 18.5            | 2001   | 800 & 1000                           |
| CT47U.11  | 47U   | 11.5            | 2223.5 | 600                                  |
| CT47U.18  | 47U   | 18.5            | 2223.5 | 800 & 1000                           |

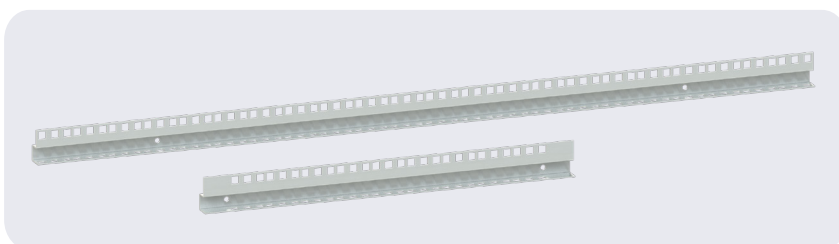
## VERTICAL POWER OUTLET 2U



Comes with an isolator switch with pilot lights

| Reference   | Units | Outlets         | Height (mm) |
|-------------|-------|-----------------|-------------|
| VPO22U.6    | 22U   | 6               | 680         |
| VPO22U.6.C  | 22U   | 6 + Connection  | 902.5       |
| VPO27U.8    | 27U   | 8               | 902.5       |
| VPO27U.8.C  | 27U   | 8 + Connection  | 1125        |
| VPO32U.10   | 32U   | 10              | 1125        |
| VPO32U.10.C | 32U   | 10 + Connection | 1347.5      |
| VPO37U.15   | 37U   | 15              | 1347.5      |
| VPO37U.15.C | 37U   | 15 + Connection | 1570        |
| VPO42U.18   | 42U   | 18              | 1570        |
| VPO42U.18.C | 42U   | 18 + Connection | 1792.5      |

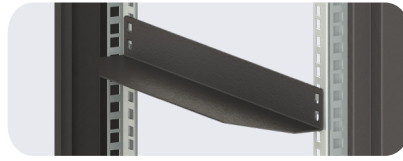
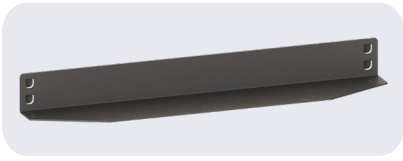
## NUT COLUMN



| Reference | Units | Width (mm) | Height (mm) |
|-----------|-------|------------|-------------|
| NUC22U    | 22U   | 20         | 981         |
| NUC27U    | 27U   | 20         | 1203.5      |
| NUC32U    | 32U   | 20         | 1426        |
| NUC37U    | 37U   | 20         | 1648.5      |
| NUC42U    | 42U   | 20         | 1871        |
| NUC47U    | 47U   | 20         | 2093.5      |

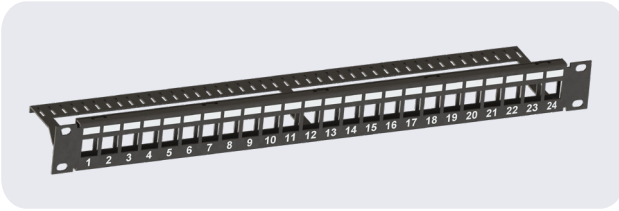


## SUPPORT ANGLE



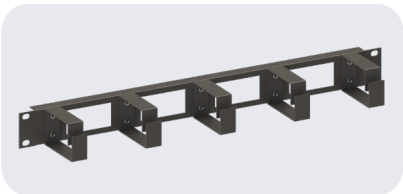
| References | Depth (mm) | Compatibility       |
|------------|------------|---------------------|
| 19" AS.32  | 320        | NC of Depth 450 mm  |
| 19" AS.37  | 370        | NC of Depth 500+ mm |

## EMPTY PATCH PANEL

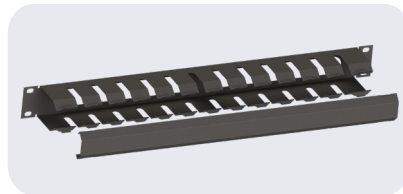


| Reference    | Units | Ports |
|--------------|-------|-------|
| 19"EPP1U.12P | 1U    | 12    |
| 19"EPP1U.16P | 1U    | 16    |
| 19"EPP1U.24P | 1U    | 24    |
| 19"EPP2U.24P | 2U    | 24    |
| 19"EPP2U.48P | 2U    | 48    |

## CABLE MANAGEMENT



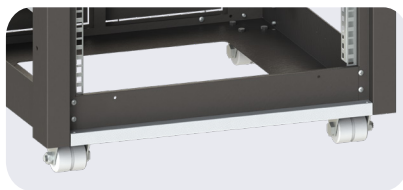
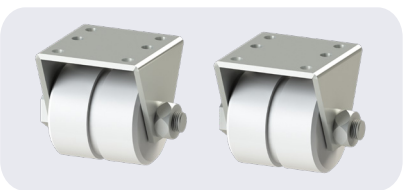
With Rings



With Cover

- 1U
- Available with rings or with cover
- Fits on all network cabinets

## WHEEL CASTERS



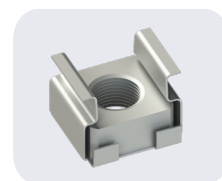
- Polyamide wheels
- For floor-standing cabinets

## COOLING FAN



- Available in two sizes
- 80 x 80 mm (Ref: CCF88)
- 120 x 120 mm (Ref: CCF1212)

## CAGE NUTS & SCREWS



- Cage nuts available as M5 and M6
- Screws available as:
- 5 x 16 mm
- 6 x 16 mm

# INDUSTRIAL | CABLE REELS

The Industrial Cable Reel, or ICR, is a heavy-duty drum-designed mild steel electrical equipment and is particularly suitable for industrial and constructional environments. It can be made with or without brakes, based on the clients requirements. Its material and design are carefully implemented to ensure high quality, support harsh conditions and provide safety of usage.

There are three types of cable reels:

- **ICR-S:** Socket Outlet Cable Reel
- **ICR-T:** Triax Cable Reel
- **ICR-AS:** Audio Snake Cable Reel

## SOCKET OUTLET CABLE REEL

The Socket Outlet Cable Reel, or ICR-S, is used for construction sites and warehouses. Each cable reel can fit up to 100 yards (91.44 meters) of 2 x 2.5 mm cable.

### FEATURES:

- 4 Outlets
- Can be made with or without brakes
- Dimensions: **H480 x W350 x D320 mm**



## TRIAx CABLE REEL

The Triax Cable Reel, or ICR-T, is suitable for installation in outside broadcast vehicles and cable testing trucks. It features a clutch to control the movement of the reel, and a lock pin to secure it. Each cable reel can fit up to 100 meters of 8 mm triax cable.

### FEATURES:

- Comes with brakes
- Dimensions: **H480 x W350 x D360 mm**

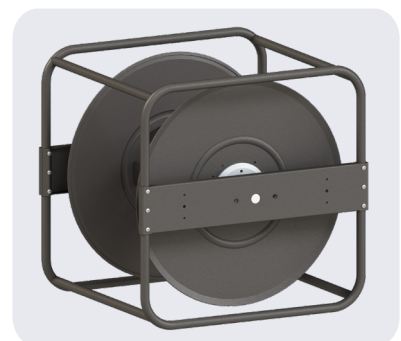


## AUDIO SNAKE CABLE REEL

Audio Snake Cable Reel, or ICR-AS, is suitable for installation in outside broadcast vehicles and cable testing trucks. It features a clutch to control the movement of the reel. The cage allows for easy carrying and stacking. Each cable reel can fit up to 100 meters of 18 mm audio snake cable.

### FEATURES:

- Comes with brakes
- Dimensions: **H535 x W525 x D640 mm**



# MODULAR BATTERY RACK

The Modular Battery Rack, or MBR, is a range of easy-to-install racks used for storage and enlargement purposes, to suit a wide variety of indoor applications. They are designed and engineered with superior quality and durability to provide large power in small footprints.

The modular battery rack is composed of shelves, vertical columns and a link column that connects the top shelf to the columns. Each shelf has a reinforcement piece welded from the bottom to give the shelf extra strength.

The number of shelves depends on the client's needs, but a five shelf rack can withstand up to 2000 Kg.

The MBR is easy to assemble using 8.8 steel grade cross self-tapping screws.



## MODULAR BATTERY RACK SPECIFICATIONS

### SHELF MATERIAL

1.25 mm thick mild steel sheet

### COLUMN LINK MATERIAL

1.5 mm thick mild steel sheet

### FINISHING

Coated with wrinkled light gray epoxy-polyester powder RAL 7035

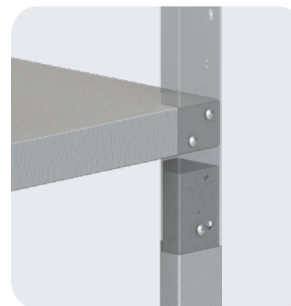
### COLUMN MATERIAL

1.5 mm thick mild steel sheet

### TREATMENT

Degreasing, phosphating, dual rinsing, passivating & kiln drying

## REFERENCES & DIMENSIONS

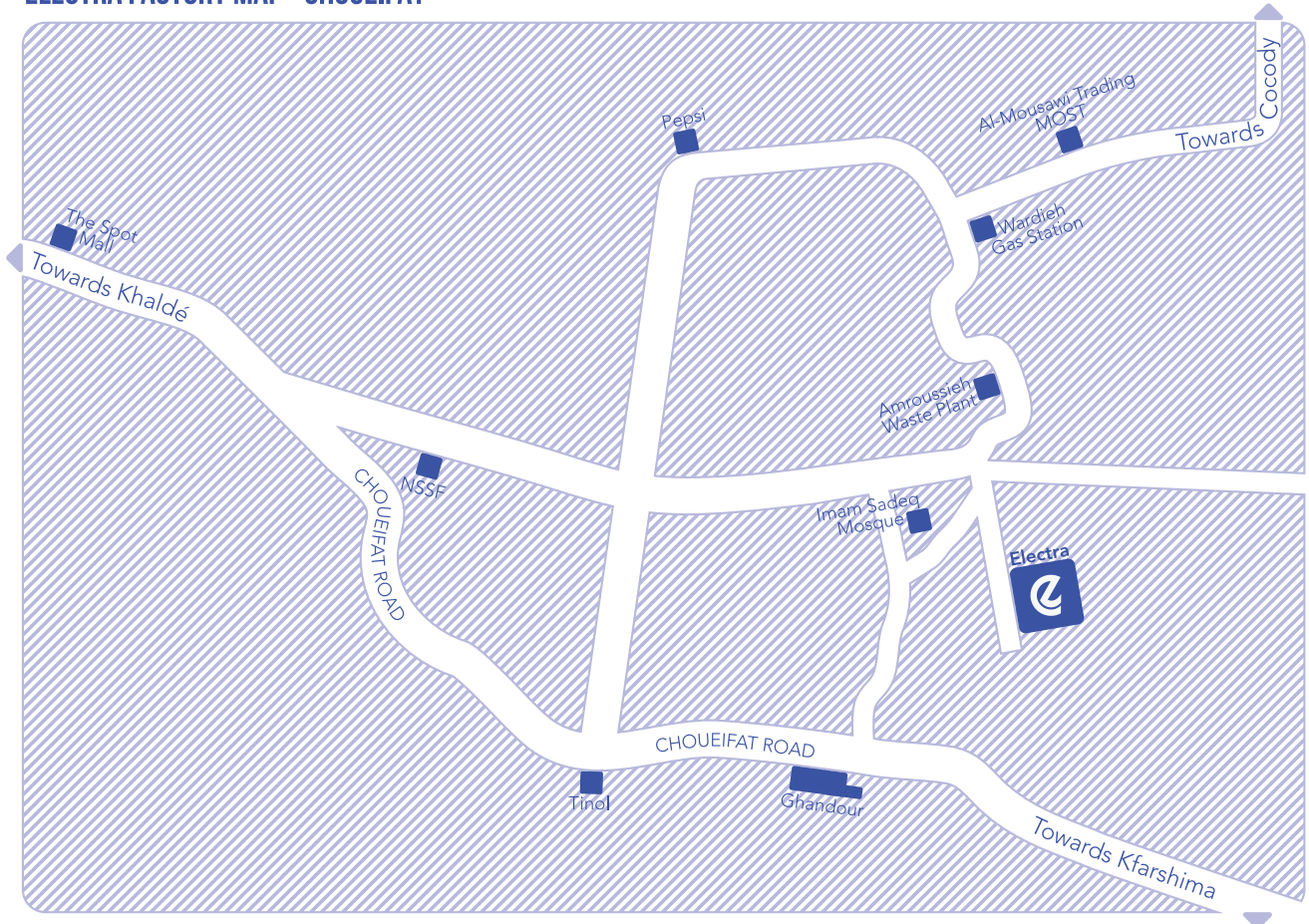


| Item                      | Reference    | Height (mm)   | Width (mm) | Depth (mm) |
|---------------------------|--------------|---------------|------------|------------|
| Shelf                     | MBRS105/62.5 | 40            | 1050       | 625        |
| Shelf                     | MBRS105/45   | 40            | 1050       | 450        |
| Shelf                     | MBRS86/43    | 40            | 890        | 450        |
| Shelf                     | MBRS88.6/35  | 40            | 890        | 350        |
| Column                    | MBRC5/47.5   | 400 + 78      | 50         | 50         |
| Column Link               | MBRLC5/12    | 120           | 50         | 50         |
| Base Support + 8 mm PVC   | MBRBS.PVC    | 55            | 55         | 63 + 8     |
| Cross Self-Tapping Screws | STS4.8/9.5   | Ø4.8 x 9.5 mm |            |            |

## ELECTRA HEADQUARTERS MAP - HARET HREIK



## ELECTRA FACTORY MAP - CHOUEIFAT



### Headquarters

+961 1 550 850/950  
+961 70 812 842



### Factory

+961 5 490 111/222  
+961 70 813 533



info@electraco.com



www.electraco.com